



K.I.D.S. TECHNICAL COLLEGE

“Creating Opportunities”

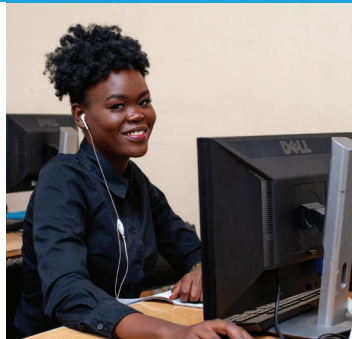


**WE ARE
TVETA
ACCREDITED**

2024 INTAKE ONGOING



STUDENT PROSPECTUS 2024



ARTISAN • CERTIFICATE • DIPLOMA • PROFESSIONAL COURSES



VISION

“As the premier, private college Offering Market driven Technical Courses, the Kenya Institute of Development Studies aspires to become a center of excellence in offering competence to learners.

To be the leading Technical training institution in the East African region and beyond specialized in producing competent technicians and professionals who have knowledge, skills, and capacity to respond to current social challenges.”

OUR BELIEF

KIDS Technical College believes that if people are empowered, they can make an immense contribution to socioeconomic development. It is our agenda to train people at all levels in relevant areas.

CORE VALUES

Equity - We believe that everyone is equal before God, regardless of one's gender, social status, religion, tribe, race or disability.

Integrity- We believe in developing a character that has a quality of being honest, reliable and fair.

Social justice – We advocate for fair and just relationship between an individual (of all race, tribe and disability status) and the society.



KNEC



KASNEB



KNDI
Kenya Nutritionists &
Dietitians Institute



NITA
NATIONAL INDUSTRIAL TRAINING AUTHORITY
ENHANCING SKILLS



**JP INTERNATIONAL
EXAMINATIONS**



NTSA
Keep our roads safe



SCHOOL OF BUSINESS STUDIES

Course Name	Exam body	Entry requirement	Duration	Fee per month	Fee per term
Artisan Course in Salesmanship Artisan Course in Storekeeping	KNEC	D-(Minus) or E Or KCPE	6 Months 2 Terms	5,500/-	16,100/-
Cert. in Road & Transport Mgt Cert. in Business Management Cert. in Supply Chain Management Cert. in Sales & Marketing Cert. in Project Management Cert. in Human Resource Management	KNEC	D (Plain)	1 Year 2 Modules 4 Terms	5,300/-	15,600/-
Cert in accountancy	KNEC	D(Plain)	6 Months 2 Terms	5,300/-	15,600/-
Cert in banking & Finance	KNEC	D(Plain)	1 Year 4 Terms	5,300/-	15,600/-
Dip. in Business Management Dip. in Supply Chain Management Dip. in Human Resource Management Dip. in Sales & Marketing Dip. in Project Management	KNEC	C- (Minus) or Pass in Cert	11/2Years 3 Modules 6 Terms	5,700/-	16,700/-
Dip. in Road & Transport Mangt Dip in Banking & Finance	KNEC	C-(Minus)	2 Years	5,700/-	16,700/-
Dip in Accountancy	KNEC	C-(Minus)	1 Years	5,700/-	16,700/-



SCHOOL OF CATERING, HOSPITALITY & TOURISM

Course Name	Exam body	Entry requirement	Duration	Fee per month	Fee per term
Artisan Course in Food & Beverage	KNEC	D-(Minus) or E Or KCPE	9 Months 3 Terms	5,500/-	16,100/-
Cert. in Food & Beverage Production, sales & Services. Cert. in Tour Guiding & Travel Operations.	KNEC	D (Plain)	1 Year 2 Modules 4 Terms	5,300/-	15,600/-
Cert. in Catering & Accommodation Operations	KNEC	D (Plain)	11/2 Years 2 Modules 6 Terms	5,300/-	15,600/-
Dip. in Food & Beverage Production,- Sales & Services Management Dip. in Tourism Management	KNEC	C- (Minus) or Pass in Cert	11/2 Years 3 Modules 6 Terms	5,700/-	16,700/-
Dip. in Catering & Accommodation Mgt	KNEC	C- (Minus) or Pass in Cert	2 Years 3 Modules 8 Terms	5,700/-	16,700/-





SCHOOL OF HEALTH SCIENCES

Course Name	Exam body	Entry requirement	Duration	Fee per month	Fee per term
Artisan in Community Health & Dvpt	JP-UK	D- (Minus)	6 Months 2 Terms	5,500/-	16,100/-
Cert. in Nutrition and Dietetics	KNEC, KNDI	D (Plain) KSCE with D(Plain) in Eng,Kis,Chem,Bio,Math /Phy/Agr/Home Sc	11/2 Year 2 Modules 6 Terms	5,300/-	15,600/-
Cert. in Community Health & Development	JP- UK / CDACC	D(Plain)	1 Year 2 Modules 4 Terms	5,300/-	15,600/-
Dip. in Nutrition & Dietetics(ND)	KNEC, KNDI	C-(Minus) KSCE with D+(Plus) in Eng,Kis, Chem, Bio, With D(plain) in Maths/Phy/Agr/HomeSc	2 Years 3 Modules 8 Terms	5,700/-	16,700/-
Dip. in Community Health & Dvpt	JP- UK / CDACC	C-(Minus) or Cert in CH	11/2 Years 3 Modules 6 Terms	5,700/-	16,700/-
Cert in Health Records & Information Technology	CDACC / TVETA	D+ (plus) D+ in Eng/Kis, D+ in Bio, D in Math/Chem/Phy	1 1/2 Years	5,300/-	15,600/-
Dip in Health Records & Information Technology	CDACC / TVETA	C (Plain) C in Eng/Kis, C- in Bio, C- in Math/Chem/Phy	2 Years	5,700/-	16,700/-



SCHOOL OF HAIR & BEAUTY

Course Name	Exam body	Entry requirement	Duration	Fee per month	Fee per term
Artisan in Hairdressing Artisan in Beauty Therapy	JP International	D- (Minus) or E / KCPE	2 Terms 6 Months	5,500/-	16,100/-
Cert. in Hairdressing & Beauty Therapy	JP International or KNEC	D (Plain)	4 Terms 1 Year	7,200/-	21,500/-
Diploma in Cosmetology	JP International or KNEC	D+ (Plus) or Cert in Hair & Beauty	8 Terms 2 Years	7,000/-	22,500/-
Diploma in Beauty Therapy	JP International or KNEC	D+ (Plus) or Cert in Hair & Beauty	6 Terms 11/2 Years	7,000/-	22,500/-
Diploma in Hair Dressing	JP International or KNEC	D+ (Plus) or Cert in Hair & Beauty	6 Terms 11/2 Years	7,600/-	22,500/-





SCHOOL OF SOCIAL SCIENCES

Course Name	Exam body	Entry requirement	Duration	Fee per month	Fee per term
Cert. in Social Development	KNEC	D (Plain)	1 Year 2 Modules 4 Terms	5,300/-	15,600/-
Dip. in Social Work Dip. in Community Development Dip. in Guidance & Counselling	KNEC	C-(Minus) or pass in Cert	1 ^{1/2} Years 3 Modules 6 Terms	5,700/-	16,700/-

SCHOOL OF I.C.T

Cert. in Information Technology (IT)	KNEC	D (Plain)	1 Year 2 Modules 4 Terms	5,700/-	15,600/-
Dip. in Information Communication Technology (ICT)	KNEC	C-(Minus) or pass in Cert	1 ^{1/2} Years 3 Modules 6 Terms	5,700/-	16,700/-

SCHOOL OF LANGUAGES

Basic Kenya Sign Language	KSL	OPEN	3 Months 1 Term	12,000/-	36,000/-
Advanced Kenya Sign Language Interpretation Level	KSL	Pass in Basic Pass in Advanced	6 Months 2 Terms	12,000/-	36,000/-
French / Spanish		OPEN	3 Months 1 Term	12,000/-	36,000/-
Englis/Kiswahili		OPEN	3 Months 1 Term	12,000/-	36,000/-

SCHOOL OF ENGINEERING

Course Name	Exam body	Entry requirement	Duration	Fee per month	Fee per term
Artisan in Electrical Engineering	KNEC	D- (Minus) & Below	9 Months 3 Terms	5,500/-	16,100/-
Cert. in Electrical Engineering	KNEC	D (Plain)	1 ^{1/2} year 2 Modules 6 Terms	5,300/-	15,600/-
Dip. in Electrical Engineering	KNEC	C- (Minus)	2 Year 3 Modules 8 Terms	5,700/-	16,700/-

NTSA DRIVING SCHOOL

Driving- New Curriculum	NTSA	OPEN	4 Weeks		17,500
-------------------------	------	------	---------	--	--------

PROFESSIONAL COURSES

CAMS - Level I & II	KASNEB	D (Plain) or vocational Cert	3 Months/Level	7,500/Paper	22,500/Level
ATD - Level I,II,III APS - Level I,II,III	KASNEB KISEB	C- (Minus) C- (Minus)	3 Months/Level	7,500/Paper	22,500/Level
CIFA Section I,II	KASNEB	C+	3 Months/Sec	7,500/Paper	21,000/Sec
CPA Foundation Level - Sec I,II CPSP - Part 1 - sec I,II CHRP - Part 1 - Sec I,II	KASNEB KISEB HRMEB	C+/ATD C+/APS-K C+	3 Months/Sec	8,000/Paper	21,000/Sec
CPA Intermediate Level - Sec III,IV CPSP - Part 2 - Sec III,IV CHRP - Part 2 - Sec III,IV	KASNEB KISEB HRMEB	Pass in Part I	6 Months/Sec	9,000/Paper	25,000/Sec
CPA Advanced Level - Sec V,VI CPSP - Part 3 - Sec V,VI CHRP - Part 3 Sec V,VI	KASNEB KISEEB HRMEB	Pass in Part II	6 Months/Sec	10,000/Paper	25,000/Sec
DICT - Level I,II,III	KASNEB	C-	6 Months/Level	7,000/Paper	18,500/Sec
CICT - Sec I-VI	KASNEB	C+ Mean Grade C+ Maths	6 Months/Sec	6,000/Paper	16,000/Sec

ICT SHORT COURSES

COMPUTER PACKAGES 4-6 Weeks

Introduction to computer
 Ms Windows
 Ms Word **1,500/- EACH**
 Powerpoint
 Publisher **6,500/- 10 PACKAGES**
 Access
 Excel
 Email & Internet
 Social Media

GRAPHIC DESIGN 4-6 Weeks

Corel Draw
 Photoshop
 Illustrator
 In Design **4,500/- EACH**
 Publisher
 Qark Express
 Print Master
 Page Maker

COMPUTERIZED ACCOUNTING

Quick Books
 Sage
 Excel **8,000/- EACH**
 Pastel
 Tally
 Peachtree
 Systemetric

WEB DESIGN

HTML,Dream Weaver **6,000**
 Java Script,Front Page **6,000**
 PHP Basic **6,000**
 PHP Advanced **6,000**
 Joomla **6,000**

PROGRAMMING

C **8,000**
 C++ **8,000**
 Visual Basic(VB) **6,000**
 Java,MySQL **12,000**
 V.Net **6,000**

PROJECT

Autocad **12,000**
 Archcard **6,000**
 Python **12,000**
 Data Analysis **6,000**

ICT COURSES

Web Design (Front End & Back End) Full Package **4-6 Weeks 30,000/-** Deep Learning **4 Weeks 12,000/-**
 SPSS **4 Weeks 12,000/-**
 CCNA (CISCO Certified Network Associate) **4-6 Weeks 12,000/-** Project Management Software **4 Weeks 12,000/-**
 Advanced Data Analysis **4-6 Weeks 12,000/-** App Development **2 Months 24,000/-**
 Machine Learning **4-6 Weeks 12,000/-** Cyber Security **2 Months 24,000/-**
 Artificial Intelligent **4 Weeks 12,000/-** Data Science **2 Months 24,000/-**



DEVELOPMENT STUDIES COURSES

Project Mangt - 1 Month 12,000/-
Project Proposal Writing - 1 Month - 12,000/-
Monitoring & Evaluation of Development Studies - 1 Month - 12,000/-
Resource Mobilization & Fundraising - 1 Month - 12,000/-
Community Mobilization for Action - 1 Month - 12,000/-
Disaster Mitigation & Preparedness - 1 Month - 12,000/-
Trainer of Trainers(TOT) - 1 Month - 12,000/-
Project Report Writing - 1 Month - 12,000/-
Advocacy & Lobbying - 1 Month - 12,000/-
Guidance & Counselling - 1 Month - 12,000/-
Social Research Methods - 1Month - 12,000/-
Project Cycle Analysis - 1 Month - 12,000/-
Drug & Substance Abuse - 1 Month -12,000/-
HIV/AIDS Management - 1 Month - 12,000/-
Environmental Impact Assessment - 1 Month - 12,000/-

HOSPITALITY COURSES

Cookery Level 1 - 1 Month - 12,000/-
Cookery Level 11 - 1 Month - 12,000/-
Pastry Level 1 - 1 Month - 12,000/-
Pastry Level 11 - 1 Month - 12,000/-
Customer Service/Front Office Mgt - 1 Month - 12,000/-
Events Management - 1 Month 12,000/-
Culinary Arts - 1 Month - 12,000/-
Accommodation & Revenue Mgt - 1 Month - 24,000/-
Wine & Bar Knowledge - 3 Months - 36,000/-
Food & Beverage Service Techniques - 3 Months - 36,000/-
Food & Beverage Service Supervision - 3 Months - 36,000/-

BUSINESS SHORT COURSES

Entrepreneurship - 1 Month 12,000/-
Monitoring & Evaluation - 1 Month 12,000/-
Business Plan - 1 Month 12,000/-
Book Keeping - 3 Months 36,000/-
Secretarial Duties - 1 Month 12,000/-
Office Practice - 1 Month 12,000/-
Store Keeping - 1 Month 12,000/-
Customer Care - 1 Month 12,000/-
CDP - 3 Months 36,000/-
Front Office/ Customer Care - 3 Months 36,000/-
Sales & Marketing - 3 Months 36,000
Financial Management - 3 Months 36,000
Public Relation - 3 Months 36,000
Project Management - 3 Months 36,000

ELECTRICAL ENGINEERING COURSES

Power Control System - 1 Month - 12,000/-
Installation technology - 1 Month - 12,000/-
Solar Installation - 1 Month - 12,000/-
CCTV Installation Technology - 1 Month - 12,000/-
Technical Drawing - 1 Month - 12,000/-

LANGUAGES

Kenya Sign Language - 3 Months - 36,000/-
English - 3 Months - 36,000/-
Kiswahili - 3 Months - 36,000/-
French - 3 Months - 36,000/-
Spanish - 3 Months - 36,000/-
Public Speaking - 3 Months - 36,000/-

HEALTH COURSES

HTS - NASCOP - 1 Month 36,000/-
Nutrition Care Process - 1 Month 12,000/-
Nutrition Education & Counseling -1 Month 12,000/-
First Aid - 1 Month 12,000/-
Food Safety/HCCP - 1 Month 12,000/-
Management of Malnutrition - 1 Month 12,000/-
Environmental Health - 1 Month 12,000/-
HIV/AIDS - 1 Month 12,000/-
Maternal & Child Health - 1 Month 12,000/-
Basic Counseling -1 Month 12,000/-
Family ,Planning - 1 Month 12,000/-
Occupational Health & Safety - 1 Weeks 12,000/-
Diet Therapy - 1 Month 12,000/-
Nutrition Assessment - 1 Month 12,000/-
Drug & Substance Abuse -1 Month 12,000/-

COSMETOLOGY COURSES

Barbering & Texturizing - 1 Month - 12,000/-
Blow Drying & Thermal Styling - 1 Month - 12,000/-
Braiding - 1 Month - 12,000/-
Colouring & Bleaching - 1 Month - 12,000/-
Eyebrow Shaping & Makeup - 1 Month - 12,000/-
Facial Treatment - 1 Month - 12,000/-
Hair Removal (Waxing) - 1 Month - 12,000/-
Massage Techniques - 1 Month - 12,000/-
Relaxing - 1 Month - 12,000/-
Nail technology Level 1 - 2 Months - 24,000/-
Nail Technology Level 2 - 2 Months - 24,000/-
Pedicure & Manicure - 2 Months - 24,000/-

REGISTRATION REQUIREMENTS

- ID Photocopy / Birth Certificate
- KCSE Certificate / Result Slip
- Two Coloured Passport Photos

OTHER FEES

Admission Fees- Ksh 1,000
 Internal Exam Termly 2,000
 Activity Fee Termly 1,000
 Computer Certificate once- term 2 – 1,200
 Attachment assessment – Once – 6,000
 Completion Certificate – Once – 2,500
 Graduation Fees- Once- 4,000
 Project/Business Plans – 700

FEES FOR PRACTICALS PER TERM

- ICT - 1,200
- Electrical engineering - 7,000
- Food & Beverage and Catering - 7,000
- Hair and Beauty - 7,000

KNEC EXAM PRACTICAL FEES

- ICT - 1,200
- Electrical engineering - 7,000
- Food & Beverage and Catering - 7,000
- Hair and Beauty - 7,000

NB

- This fees does not include External Exams fee
- All fees is paid to the school Bank Account shown below. No cash payment shall be accepted
- Fee doesn't include Practical Material



**FREE WI-FI
AVAILABLE**



**HOSTELS
AVAILABLE**

FREE TRANSPORT FOR NAIVASHA CAMPUS

PAYMENT DETAILS

NAIROBI CAMPUS BANK DETAILS		MPESA PAYMENT OPTION	
Bank Name	Equity Bank	Paybill	247247
Branch	Parliament Road		
Ac Name	Kenya Institute of Development Studies Ltd	Ac No.	0180294066765
Ac No	0180294066765		

NAIVASHA CAMPUS BANK DETAILS		MPESA PAYMENT OPTION	
Bank Name	KCB Bank	Paybill	522123
Branch	Kipande Road		
Ac Name	Kenya Institute of Development Studies Ltd	Ac No.	87363K
Ac No	1104005220		

EXTERNAL EXAM PAYMENT ACCOUNT – ALL CAMPUSES		MPESA PAYMENT OPTION	
Bank Name	Equity Bank	Paybill	247247
Branch	Parliament Road		
Ac Name	KIDS Technical College Ltd	Ac No.	1770282929469
Ac No	1770282929469		



NAIROBI CAMPUS

Tumaini House 6th Floor , Moi Avenue

Adjacent to Kencom House

P.O. Box 40291-00100, Nairobi

Tel: 0725 857 976

 0741 698 918

Email: info@kidstudies.ac.ke

KAMERE CAMPUS - NAIVASHA

Kamere Market

Moi South Lake Road

P.O. Box 1727 - 20117, Naivasha

Tel: 0115 646 843

Email: kamere@kidstudies.ac.ke


NAIVASHA CAMPUS

Viazi House, 3rd Floor, Kenyatta Street

Karagita Stage, next to Naivas Ndogo

P.O.Box 1727-20117, Naivasha

Tel: 0707 539 363

 0112 817 992

Email: naivasha@kidstudies.ac.ke

KARAGITA CAMPUS - NAIVASHA

Absa Bank Building

Moi South Lake Road

P.O. Box 1727 - 20117, Naivasha

Tel: 0700 154 053

Email: karagita@kidstudies.ac.ke



@KIDS Technical College

www.kids.ac.ke